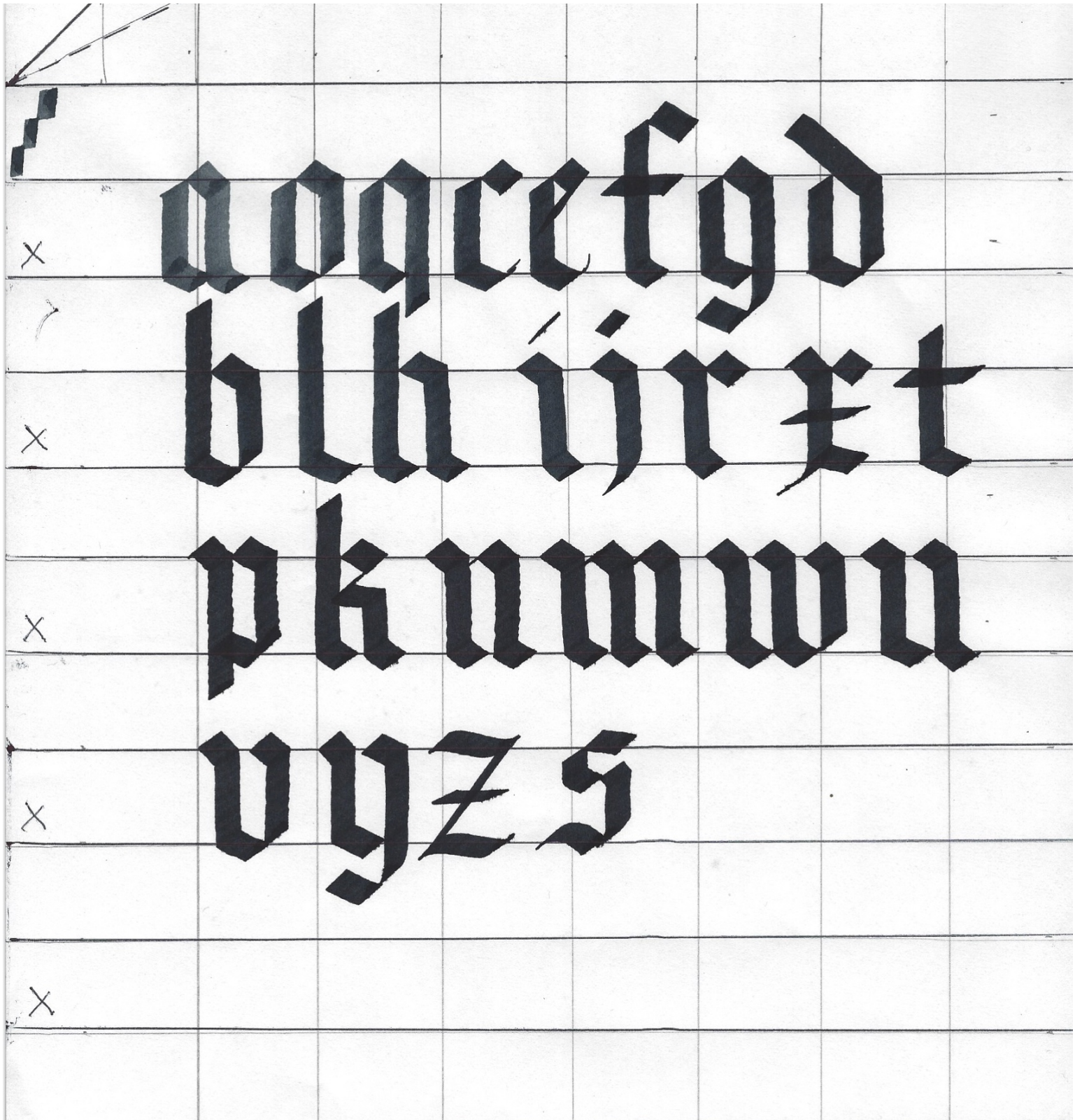


# Black Letter





01031450  
Cammie Taylor  
2024

Handwritten calligraphic letters in a Gothic style on a grid background. The letters are arranged in four rows:

Row 1: A, B, C, D

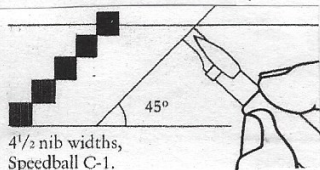
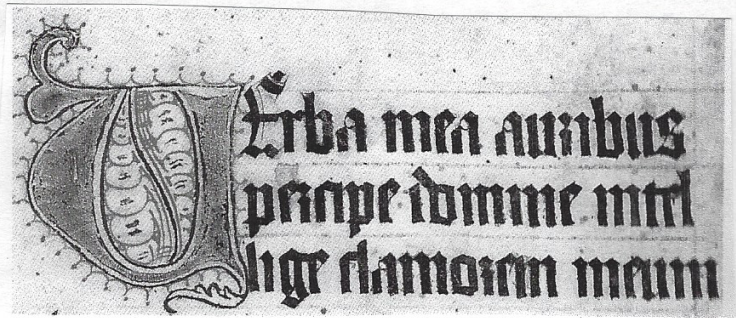
Row 2: E, F, G, H

Row 3: I, J, K, L

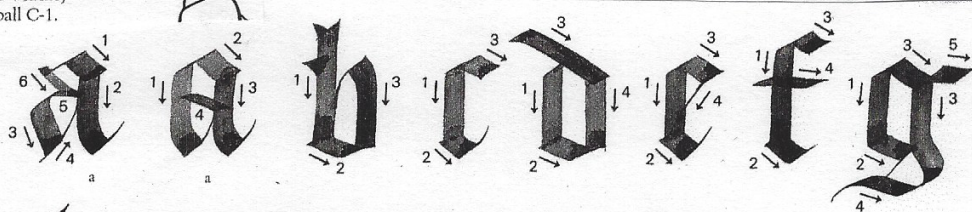
Row 4: M

# GOTHIC TEXTURA SCRIPT

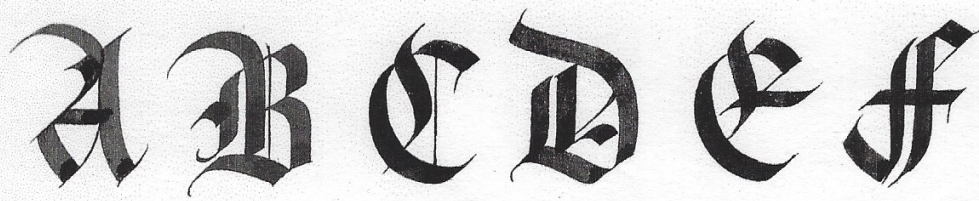
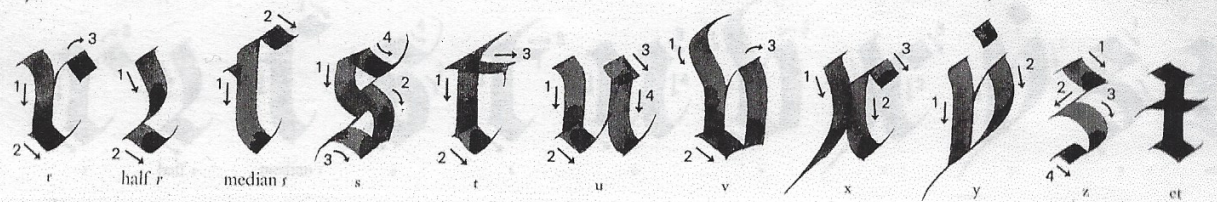
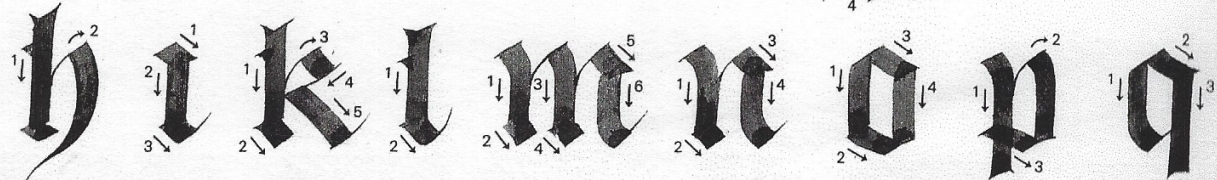
(14TH CENTURY)



4 1/2 nib widths, Speedball C-1.



Above: Gothic *textus prescius*, c.1400. Taken from a broadside produced by the scribe Johannes von Hagen.



The 14th century *textus quadratus* was much used in Île-de-France. Note the two forms which the *a* can take, as well as the half *r*, the median *r* and the dotted *y*. The height of the capital is 6 1/2 nib widths.

