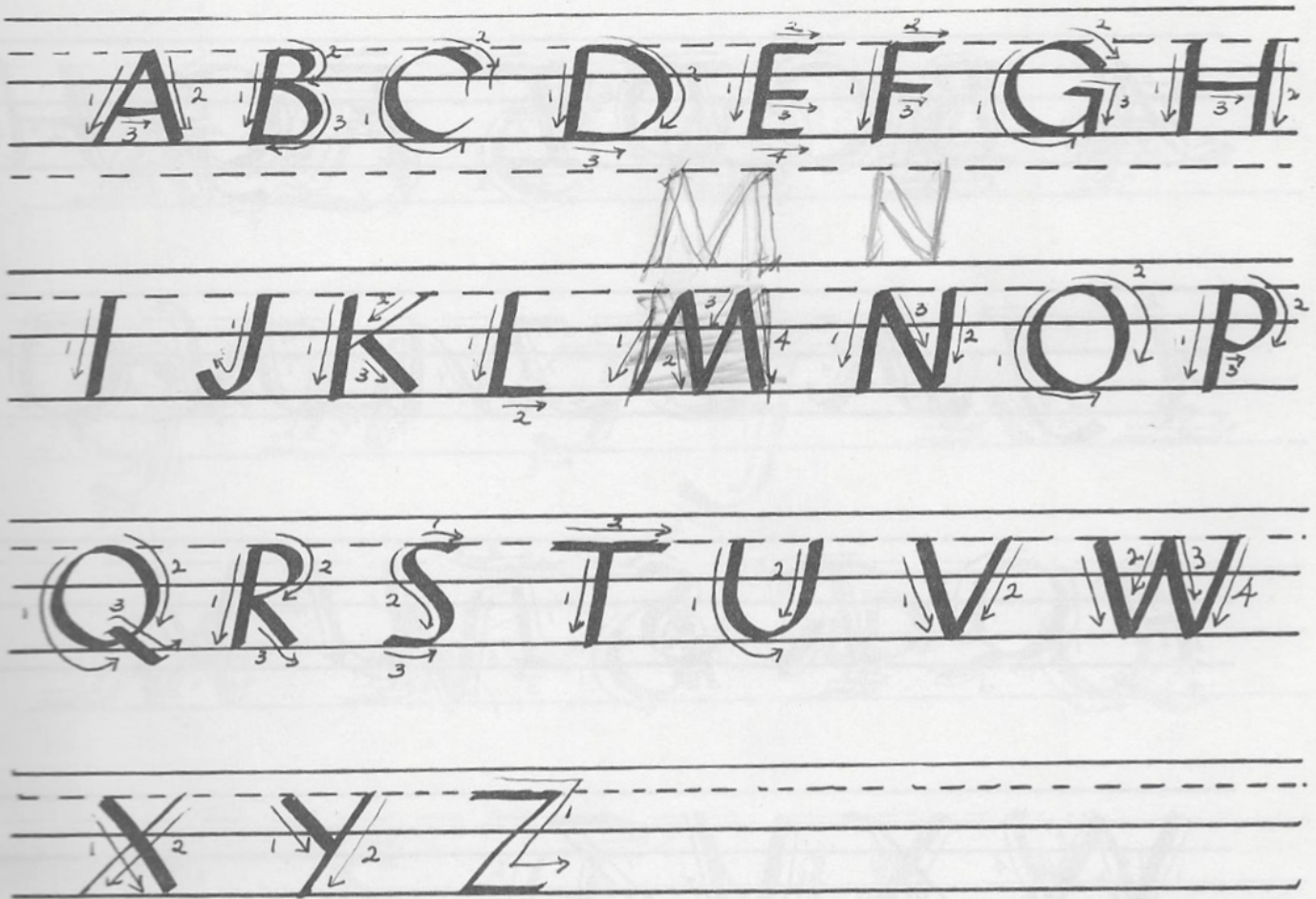
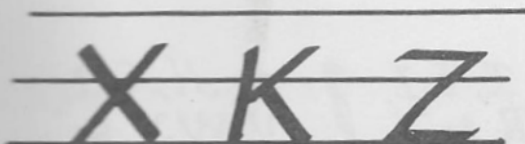
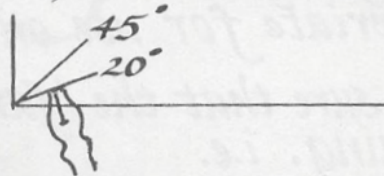


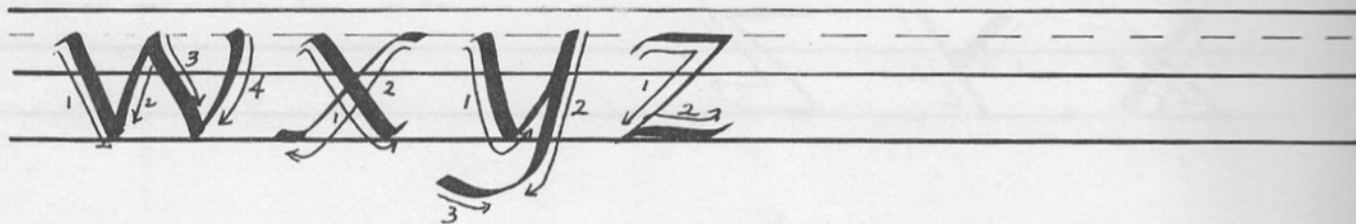
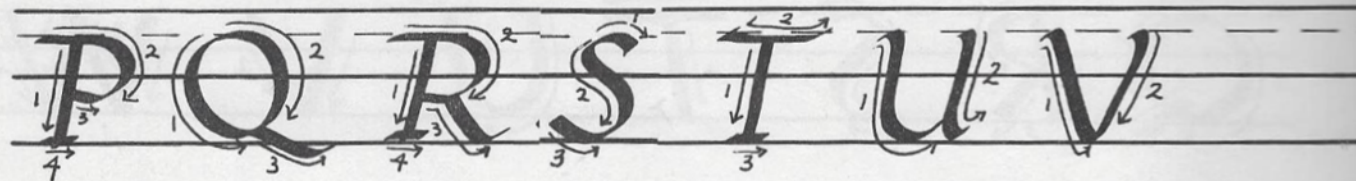
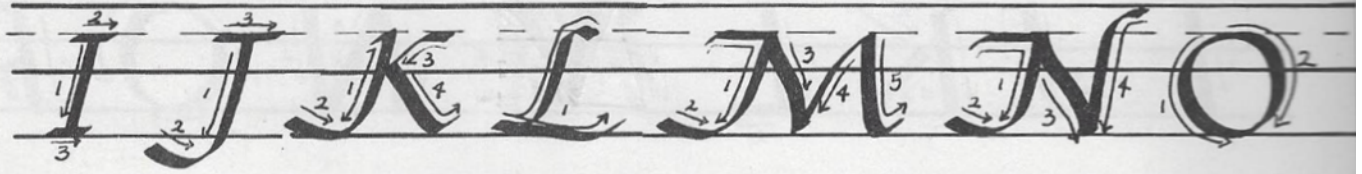
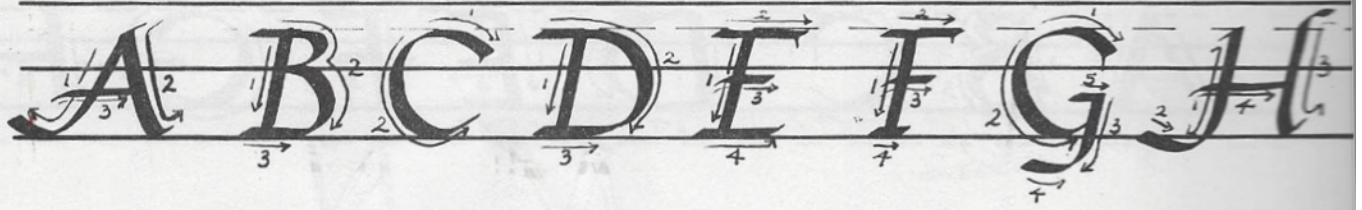
Block Capitals



This is a very basic alphabet and most artists vary it by turning the pen for different pen angles. This gives a variation as to the thick and thins. The turn of the pen is usually used on K, X, Y, & Z to make the thin lines a little heavier.






Basic Italic Caps



These letters have a little more flourish than the block capitals, but they are simple enough to be used within a piece of poetry or prose without being too heavy. They are also very appropriate for use on certificates.

Be sure that the 'family' strokes are apparent and matching. i.e.

 on A, G, H,
J, K, M, N,
& y

 on E, F, I
P, R, & T  on H, K, U,
V, W, X, &
y

Let's Practice

As we begin to learn the lower case letters using the pen, we will make a plus sign and a box before each letter to insure proper pen angle.

+o n +o m +o u +o h

+o y +o í +o j +o a +o g

+o q +o d +o b +o p +o v

+o w +o l +o c +o e +o t

+o k +o r +o s +o x +o z

+o f +o o

Review

One stroke letters

a b c g h k l m n o q r s u v w y z

Two stroke letters

d e f i j p t x

Sharp entrance

i j p u y

Curved entrance

m n r v w x

Narrow curved exit

d h i k m n u x

Wide curved exit

c e l o t

Sharp serif exit

q