

“Gothicized Italic” is really “Pointed Gothic”

A B C D E F G H I J K L M N

O P Q R S T U V W X Y Z

ā ð a b c d d e f g h i j k l m n o p q r s t u

Tall, narrow Gothicized Italic (or Pointed Gothic); pen angle about 45°; flatten pen angle for crossbars; 5 nib widths body height

v w x y z & ? ! 1 2 3 4 5 6 7 8 9 0

Tails for odd numbers, ascenders for even numbers use also for formal Blackletter

pen angle 45° for narrow version;
use left corner of nib to draw hairline up

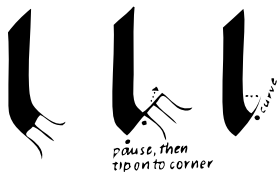




Diagram 1

counters of over arches like gothic windows  under arches and serif counters 
like wine glasses

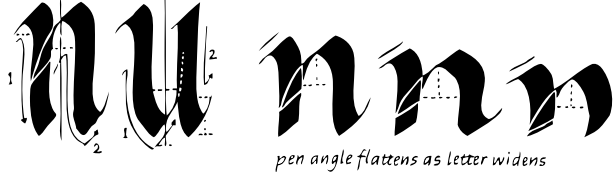
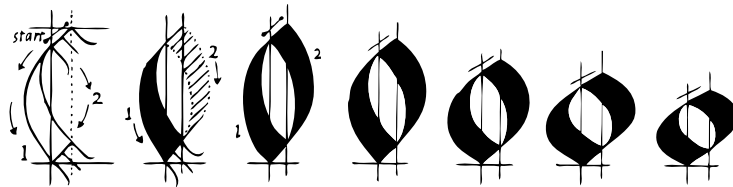


Diagram 2



lift off,
no cornering for o and other closed bowls

Diagram 3

pen angle flattens as letter widens

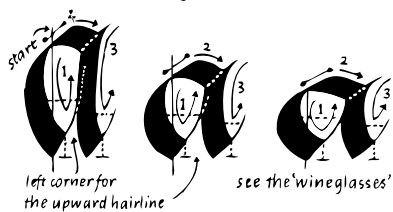
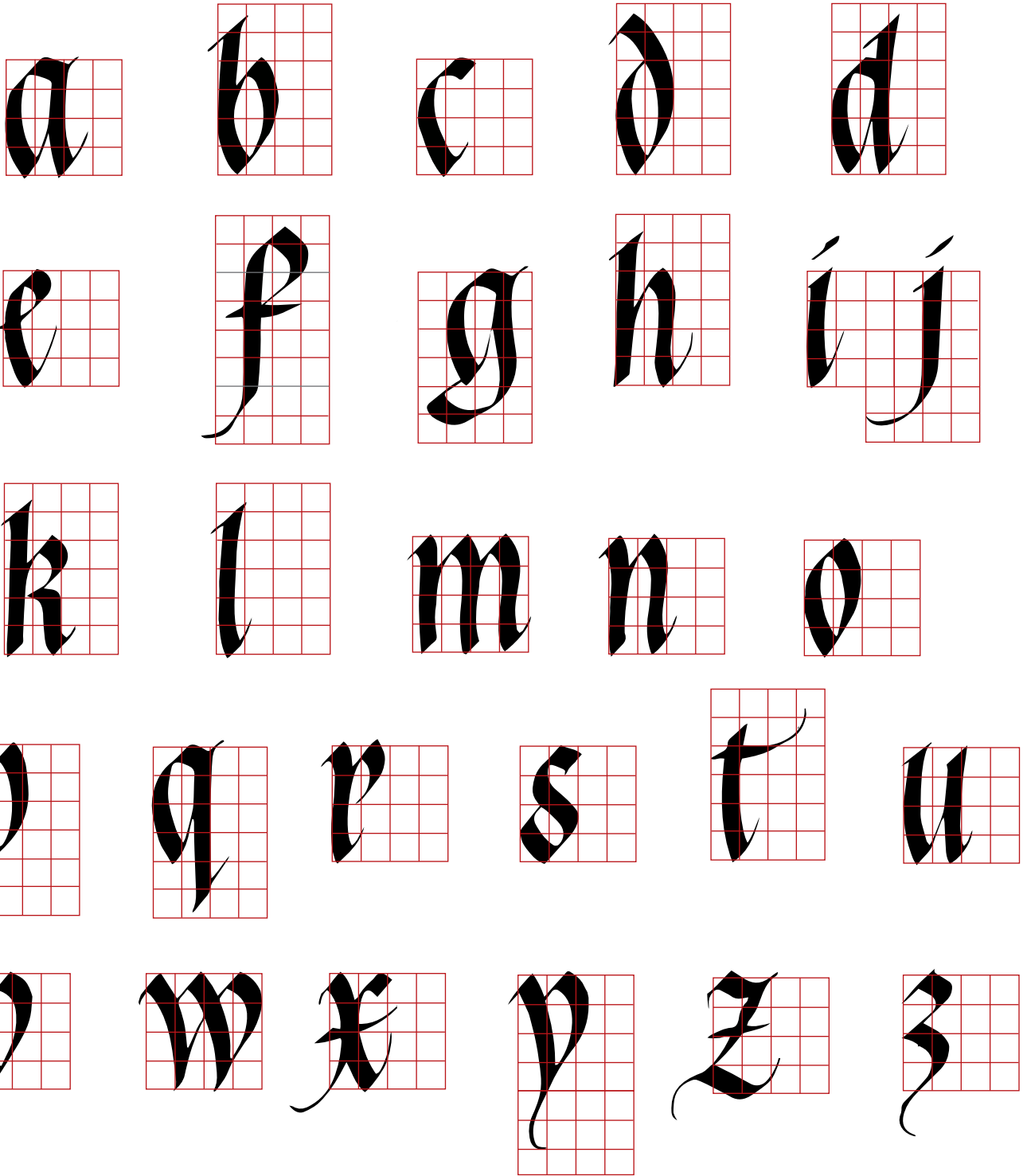


Diagram 4



steepen pen angle for all diagonal thick strokes

Diagram 5



o a b c d d e f g h i j k l m n o p q r s t u
v w x y z z

LETTERS FROM
"FOUNDATIONS OF CALLIGRAPHY"
BY SHEILA WATERS

Ace. Biz. Chi. Dad. Esq
Fly. Gig. Hub. Ivy. Jam
Kit. Law. Now. Net. Off
Pop. Qat. Raj. Ski. Try
Urn. Van. Wax. Xis. Yes
Zip. a. dee. doo. dah!

Quick Fox Copy Dog

X-height is 5 pen widths (p.w.) for lower case. Add an extra 1 to 1 1/2 p.w. for Majuscules

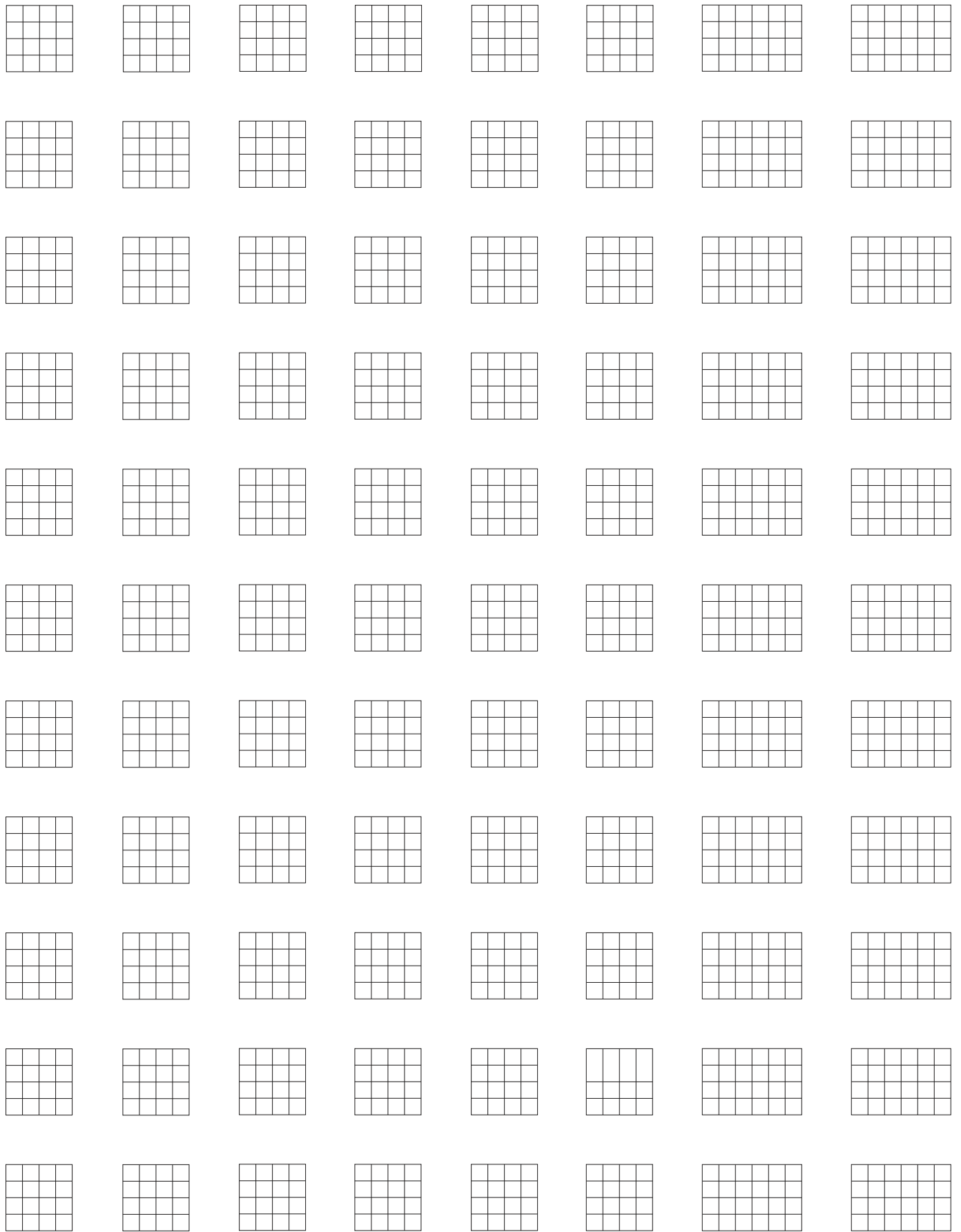
A TO Z

The only real failure
is the failure to try
and the measure of success
is how we cope
with disappointment.

Gothicized Italic

Jane Hales
© 2023

GRID PRACTICE SHEET



*Optional